

FOR IMMEDIATE RELEASE

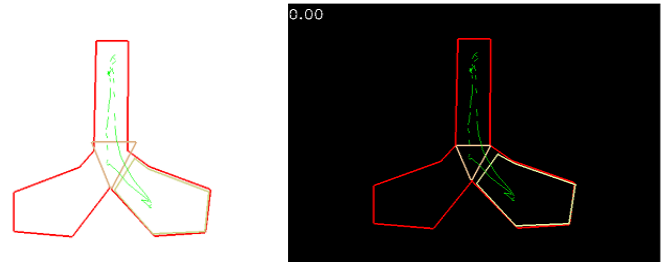
Plexon® Announces the release of CineLAB® 4.1 – the latest version of our video-tracking software designed specifically for behavioral neuroscience experiments.

Additional Functionality Includes:

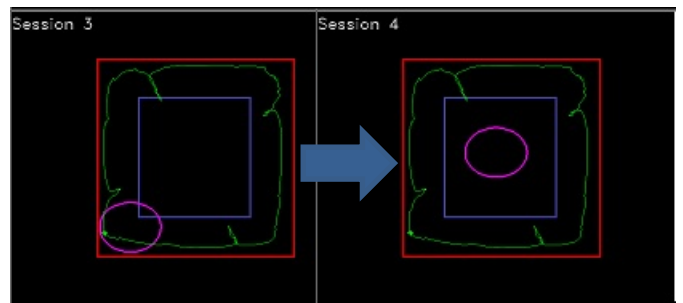
- ✓ **NEW: Enhanced Automatic Results** - Group data based on experimenter-defined variables and view statistical outputs (mean, SD) in an easy-to-read table format - exportable to .csv file.

Parameter	Group	Mean	Std Dev	N Sessions
Session Duration (s)	SCH 23390	112.244	14.157	7
Session Duration (s)	Vehicle	117.595	0.000	4
Total Track Length (pix) for CG	SCH 23390	3096.438	1611.012	7
Total Track Length (pix) for CG	Vehicle	4311.342	305.664	4
Average Speed (pix/s) for CG	SCH 23390	28.040	14.323	7
Average Speed (pix/s) for CG	Vehicle	36.663	2.599	4
Time in 'Zone 1' Zone (s) for CG	SCH 23390	6.654	3.820	7
Time in 'Zone 1' Zone (s) for CG	Vehicle	9.256	0.115	4
Track Length for 'Zone 1' Zone (pix) for CG	SCH 23390	223.220	129.817	7

- ✓ **NEW: Enhanced Graphics** – Choose from two different backgrounds for presentation-worthy graphics
- ✓ **NEW: Overlays Feature** - Offers the ability to apply previous experimental settings to the current experiment. Compare your results using different arena and zone configurations in seconds, no need to re-track videos!



- ✓ **NEW: Flexible Scenes Feature** - Our user-defined experimental settings are the *most* flexible on the market. We allow you to alter the position of arenas and zones within an apparatus on a *per-session basis*. Camera moved between animals? No problem! You can simply alter the position of your arena and zones and get back to your current experiment *without* changing the setup for your previous sessions. Also, alterations can be performed during post-hoc analyses for maximum flexibility.



Don't forget - Ask about our comprehensive solutions for behavior tracking combined with our **PlexBright®** optogenetics systems as well as video tracking setups for Lafayette Instrument® Company operant and Bussey® Touchscreen Chambers! **Contact us at info@plexon.com so we can customize a solution for your lab.**