

### Mating Connector



CON/8o50m-10P  
(10-pin)

(Omnetics #A11365-001)

### Headstage

(picture not to scale)



HST/EMG-8o50-G20  
(gain=20)

(Input Connector:  
Omnetics #A11862-001)

Headstage Dimensions:  
Length = 1.5" (38.1 mm)  
Width = 0.63" (16.0 mm)  
Thickness = 0.1182" (3.00 mm)

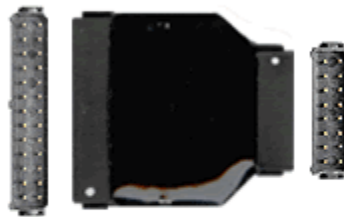
### Mating Connector



CON/HF-26P  
(26-pin)

### Headstage

(picture not to scale)



HST/12EMG-26H-G20  
(gain=20)

Headstage Dimensions:  
Length = 1.2" (30.5 mm)  
Width = 1.14" (29 mm)  
Thickness = 0.2" (6 mm)